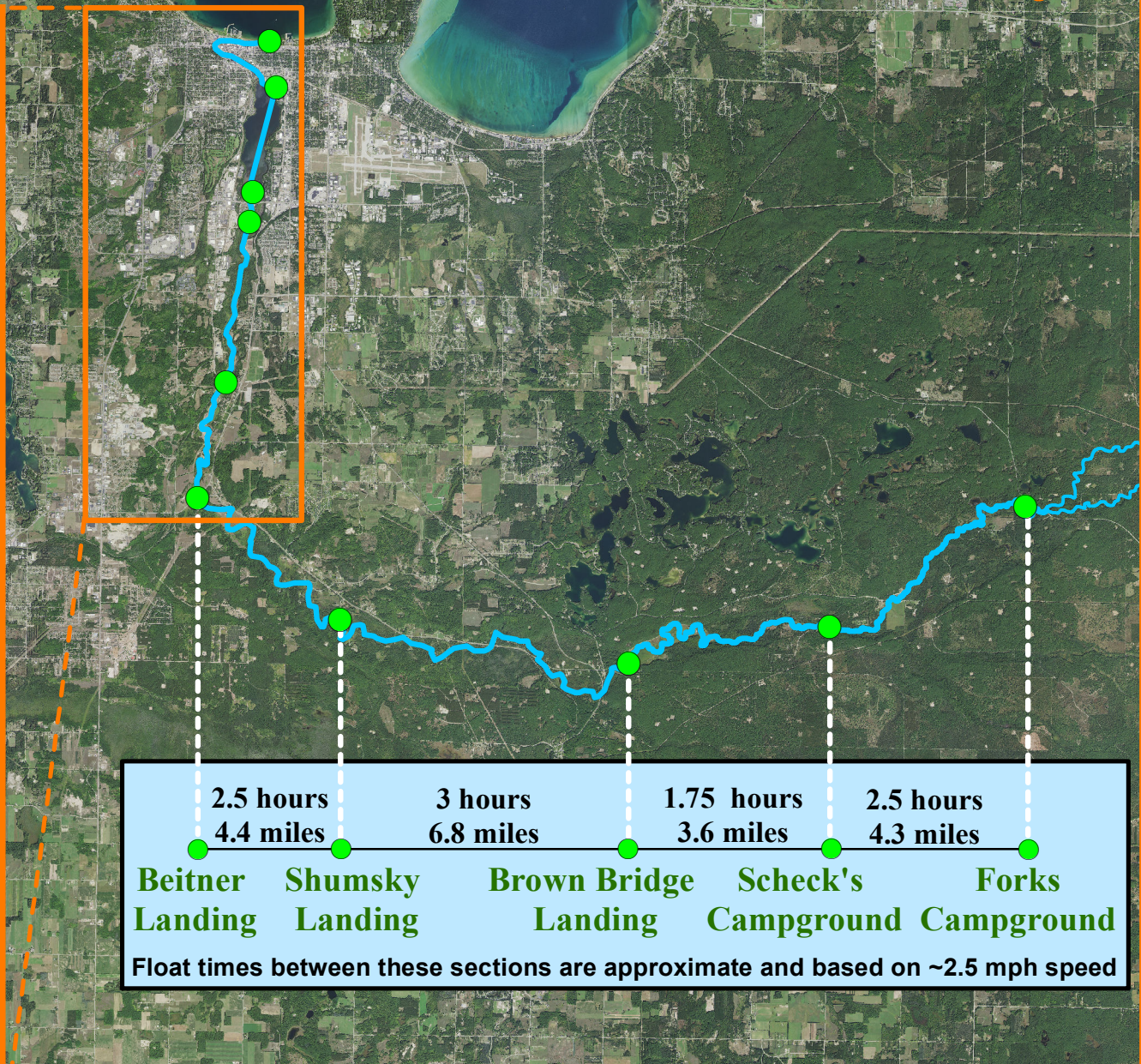
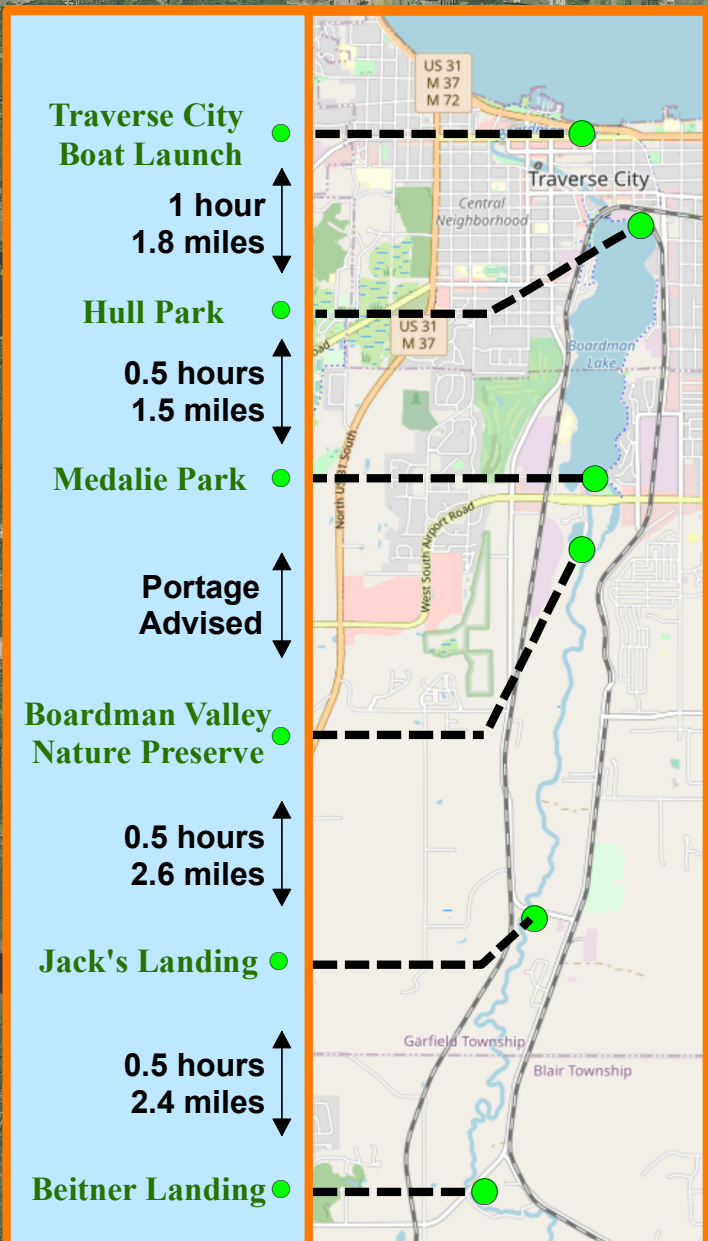


Boardman River Float Times Map



2.5 hours	3 hours	1.75 hours	2.5 hours
4.4 miles	6.8 miles	3.6 miles	4.3 miles
Beitner Landing	Shumsky Landing	Brown Bridge Landing	Scheck's Campground
Forks Campground			

Float times between these sections are approximate and based on ~2.5 mph speed

FLOAT TIMES ARE APPROXIMATE ~ FLOAT SPEEDS VARY SIGNIFICANTLY THROUGHOUT THESE SECTIONS